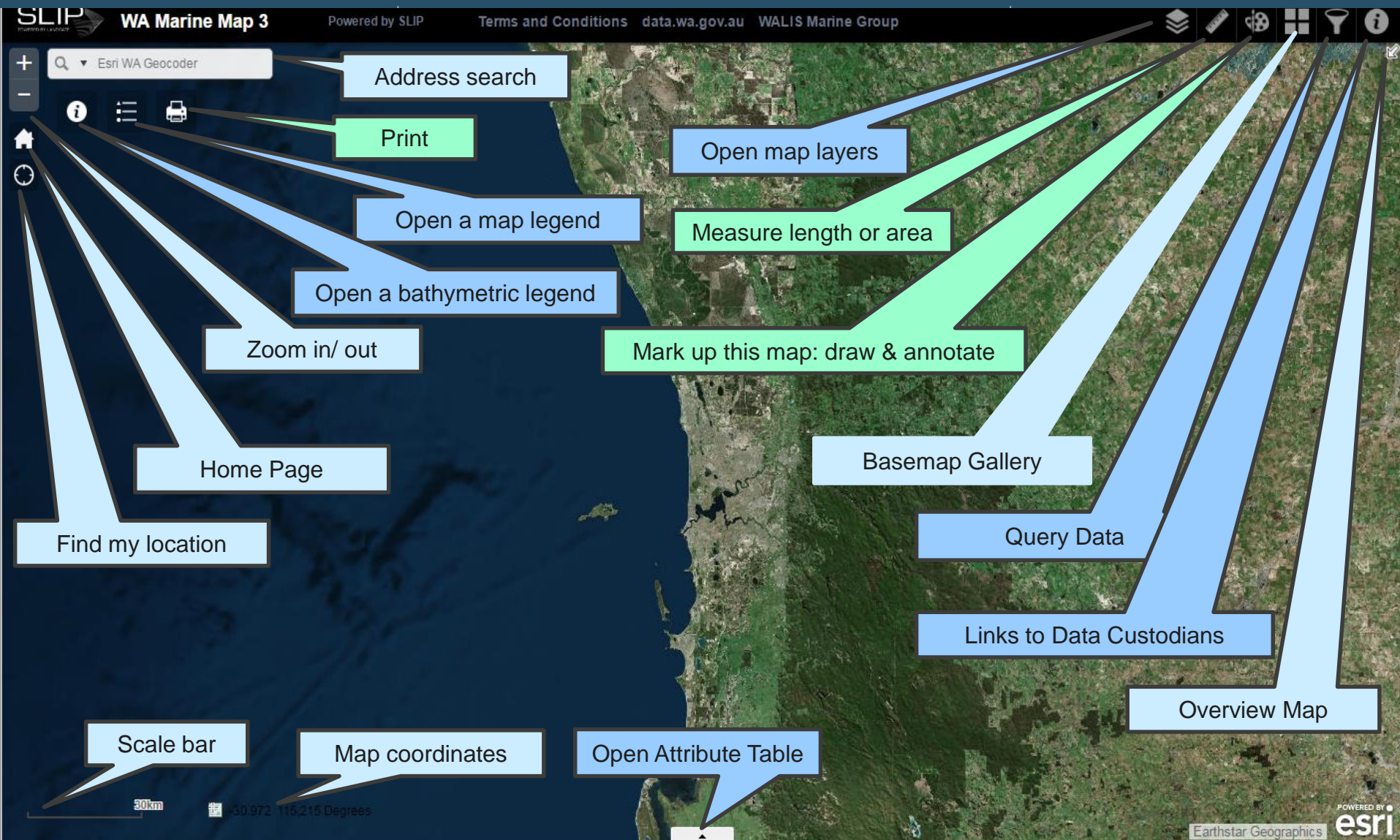


Western Australian Marine Map

Get started by visiting:

<https://maps.slip.wa.gov.au/Marine/app/>

Western Australian Marine Map: **Functionality**



Data Layers: Layer Grouping and Layer Functionality

SLIP
POWERED BY LANDGATE

WA Marine Map 3

Powered by SLIP

Terms and Conditions

data.wa.gov.au

WALIS Marine Group

+

Q

Esri WA Geocoder

Exmouth Plateau

Montebello Saddle

Sonja Ridge

Sonne Ridge

Cuvier Plateau

Wallaby Saddle

Carnarvon Terrace

3 Main Layer Groups:

• 1 Marine Map WA

• 2 WA Bathymetry

• 3 Locate

1 Marine Map WA

• Maritime & Shipping
shipwrecks, Archaeological sites, Port Authorities, Navigation Aids, Shipping Pilotage, Marine & Harbours act areas

• Coastal Planning
coastline movements, coastal plans & infrastructure

• Land Features & Boundaries
localities, LGA, Roads, Cadastre

• Geological & geophysical
sediment cells, coastal compartment

• Mining & Petroleum
Petroleum wells, pipelines, releases, applications, titles

• Marine Parks & Fishing
Managed Lands and Waters

2 WA Bathymetry

• Point survey index

• Bathymetry Images
Kimberley, Pilbara, Gascoyne, Mid West, Metro, South West, South coast

3 Locate

• Virtual Mosaic Index

• Virtual Mosaic Imagery
Boundary
Footprint
Image

Layer List

Operational Layers

☒

Marine_Map_WA_3

Zoom to

Transparency

Move up

Move down

Description

☐

Maritime & Shipping

☐

Coastal Planning

☐

Land Features & Boundaries

☐

Geological & Geophysical

☐

Mining - Petroleum

☐

Marine Parks & Fishing

☒

WA_Bathymetry

☐

Point Survey Index

☐

Bathymetry Images

☒

Locate

☐

Locate_VM_INDEX

☐

Locate_VM_Imagery

Great Australian Bight

Eyre Terrace

Ceduna Terrace

Whale Canyon

Esperance Canyon

Perth

Landgate / SLIP | WALIS | Esri, GEBCO, DeLorme, NaturalVue

Data Layers: Switching on layers

SLIP WA Marine Map 3 Powered by SLIP Terms and Conditions data.wa.gov.au WALIS Marine Group

Esri WA Geocoder

Open Layer List

Ensure the **Top Layer** folder is ticked on ✓

✓ Select the Group Layer

✓ Select the individual Layers

Layer List

- Operational Layers
 - ☒ Marine_Map_WA_3
 - ☐ Maritime & Shipping
 - ☒ Coastal Planning
 - ☒ Coastline Movements - Vegetation Lines
 - ☒ Coastal Plan Locations (DOP-086)
 - ☒ Coastal Plan Extents - Simplified (DOP-087)
 - ☒ Coastal Infrastructure DOT
 - ☒ Cockburn Sound Management Council Boundary (DER-017)
 - ☐ Land Features & Boundaries
 - ☐ Geological & Geophysical
 - ☐ Mining - Petroleum
 - ☐ Marine Parks & Fishing
 - ☐ WA_Bathymetry
 - ☒ Locate

20km 28° 23' 11.4740 Degrees

Landgate / SLIP | WALIS | NIWA, GeosciencesAus

Data Layers: Switching on layers for Bathymetry

SLIP WA Marine Map 3 Powered by SLIP Terms and Conditions data.wa.gov.au WALIS Marine Group

Esri WA Geocoder

Open Bathymetry Layer List

Bathymetric Legend

Hydrographic Composite Surface
Bathymetric Legend (metres)

Composite surface surveys created from all multi-beam, laser and LiDAR surveys loaded into the Bathymetric Information System managed by Coastal Information Branch, DoT, Fremantle.

-32 ~ -31	-30 ~ -29	-28 ~ -27	-26 ~ -25	-24 ~ -23	-22 ~ -21	-20 ~ -19	-18 ~ -17	-16 ~ -15	-14 ~ -13	-12 ~ -11	-10 ~ -9	-8 ~ -7	-6 ~ -5	-4 ~ -3	-2 ~ -1	0 ~ 1	1 ~ 2	2 ~ 3	3 ~ 4	4 ~ 5	5 ~ 6	6 ~ 7	7 ~ 8	8 ~ 9	9 ~ 10	10 ~ 11	11 ~ 12	12 ~ 13	13 ~ 14	14 ~ 15	15 ~ 16	16 ~ 17	17 ~ 18	18 ~ 19	19 ~ 20	20 ~ 21	21 ~ 22	22 ~ 23	23 ~ 24	24 ~ 25	25 ~ 26	26 ~ 27	27 ~ 28	28 ~ 29	29 ~ 30
-----------	-----------	-----------	-----------	-----------	-----------	-----------	-----------	-----------	-----------	-----------	----------	---------	---------	---------	---------	-------	-------	-------	-------	-------	-------	-------	-------	-------	--------	---------	---------	---------	---------	---------	---------	---------	---------	---------	---------	---------	---------	---------	---------	---------	---------	---------	---------	---------	---------

Ensure the Top Layer folder is ticked on ✓

Layer List

Operational Layers

- ☒ Marine_Map_WA_3
 - ☐ Maritime & Shipping
 - ☐ Coastal Planning
 - ☐ Land Features & Boundaries
 - ☐ Geological & Geophysical
 - ☐ Mining - Petroleum
 - ☐ Marine Parks & Fishing
- ☒ WA_Bathymetry
 - ☒ Point Survey Index
 - ☐ Bathymetry Images
 - ☒ Kimberley
 - ☒ Pilbara
 - ☒ Gascoyne
 - ☒ Mid West
 - ☒ Metro
 - ☒ South West
 - ☒ South Coast
 - ☒ Locate

✓ Select the Bathymetry Group

✓ Select the individual Layers

1km 29.738 114.610 Degrees

Landgate / SLIP | W

Data Layers: set Transparency

SLIP WA Marine Map 3 Powered by SLIP Terms and Conditions data.wa.gov.au WALIS Marine Group

Esri WA Geocoder

Use the slider bar to adjust the transparency of the layers to see the imagery underneath

Layer List

Opaque Transparent 0% 50% 100%

Zoom to Transparency

Move up Move down Description

- ☒ Bathymetry Images
 - ☐ Kimberley
 - ☐ Pilbara
 - ☐ Gascoyne
 - ☐ Mid West
 - ☐ Metro
 - ☒ South West
 - ☒ DOT_Yalgorup_5m_Image_20151704.img
 - ☒ DOT_Binningup_5m_Image_20151704.img
 - ☒ DOT_Bunbury_5m_Image_20151704.img
 - ☒ DOT_Busselton_5m_Image_20151704.img
 - ☒ DOT_CapeI_5m_Image_20151704.img
 - ☒ DOT_Naturaliste_5m_Image_20151704.img
 - ☒ South Coast
 - ☒ DOT_Albany_5m_Image_20151704.img
 - ☐ DOT_Augusta_5m_Image_20151704.img

1km -33.304 115.736 Degrees

Data Layers: Attribute Table

SLIP WA Marine Map 3 Powered by SLIP Terms and Conditions data.wa.gov.au WALIS Marine Group

Esri WA Geocoder

Open a table view to see the data attributes

Options:

- Show selected records
- Show related records
- Filter by map extent
- Show / Hide columns
- Export to CSV

Show / Hide columns

Layer List

- Marine Parks & Fishing
 - DPAW Managed Lands and Waters (DPAW-026)
 - Nature Reserve
 - Conservation Park
 - 5(1)(g) Reserve; 5(1)(h) Reserve; Miscellaneous Reserve
 - Marine Park; Marine Nature Reserve; Marine Management Area
 - River Reserve - Rivers and Estuaries
 - State Forest; Timber Reserve; CALM Exec Body Freehold

Options Zoom to Clear Selection Refresh

DPAW Managed Lands and Waters (DPAW-026)

class	identifier	purpose	vesting	name	name_stat	legal_area	tenure	act	category	notes
A	M 3	Marine Park	Marine Parks And Reserves Authority	Rowley Shoals Marine Park	Gazetted	0	Crown Land		Marine Park	
A	M 11	Marine Management Area	Marine Parks And Reserves Authority	Barrow Island Marine Management Area	Gazetted	0	Crown Land		Marine Management Area	
A	F 34	State Forest	Conservation Commission Of WA	North Donnelly State Forest	Unofficial	33,627.6	Crown Land		State Forest	
A	R 34257	Conservation Of Flora And Fauna	Conservation Commission Of WA	Swan Island Nature Reserve	Gazetted	29.0322	Crown Land		Nature Reserve	

12828 features 1 selected

- purpose
- vesting
- name
- name_stat
- iucn
- legal_area
- tenure
- act
- category

Western Australian Marine Map: Query Data

SLIP WA Marine Map 3 Powered by SLIP Terms and Conditions data.wa.gov.au WALIS Marine Group

Esri WA Geocoder

Run predefined queries

Query

Select one of the following task items to execute the query.

- Localities (LGATE-008)
- Port Authorities (LGATE-132)
- Shipwrecks (WAM-002)
- Maritime Archaeological Sites (WAM-001)

Clear Results

Western Australian Marine Map: Measurements

SLIP WA Marine Map 3 Powered by SLIP Terms and Conditions data.wa.gov.au WALIS Marine Group

Esri WA Geocoder

Measure lengths and areas, or get map coordinates

Click each corner of the shape you want to measure

Perth Canyon

Duffield Ridge

Sepia Depression

Perth

Swan River

2858

Measurement

Sq Meters

Measurement Result

122,116,411.0 Sq Meters

10km

-31.821 116.163 Degrees

WALIS | NIWA, GeosciencesAustralia,

Western Australian Marine Map: Drawing and Annotation

SLIP WA Marine Map 3 Powered by SLIP Terms and Conditions data.wa.gov.au WALIS Marine Group

Esri WA Geocoder

Print OR Screen grab (PrtSc) to share your annotated map with colleagues

Use the 'Draw' feature to annotate your map

Draw

Select drawing mode

Preview:

Color

Transparency

Outline Color

Outline Width

☐ Show Measurements

Undo Redo Clear

10km

-31.739 116.491 Degrees

WALIS | NIWA, GeosciencesAustralia,

The screenshot displays the 'WA Marine Map 3' interface. The map shows the coastal region of Western Australia, including Perth, the Swan River, and the Canning River. A series of blue dots are plotted along the coast. A green callout box points to the 'Draw' button in the top right corner, which is circled in blue. Another green callout box points to the 'Print' button in the top left corner. The 'Draw' panel on the right side of the map is open, showing various drawing tools (point, line, polygon, etc.) and a color selection palette. The map includes a scale bar (10km) and coordinates (-31.739 116.491 Degrees).

Western Australian Marine Map: Basemap

SLIP WA Marine Map 3 Powered by SLIP Terms and Conditions data.wa.gov.au WALIS Marine Group

Esri WA Geocoder

Cocos Keeling Rise

Select an alternative background from the Esri Basemap Gallery

Esri Basemap Gallery

- Dark Gray Canvas
- Imagery
- Imagery with Labels
- Light Gray Canvas
- National Geographic
- Oceans
- OpenStreetMap
- Streets
- Terrain with Labels
- Topographic

Wharton Basin

Exmouth Plateau

Montebello Saddle

Cape Range Canyon

Cuvier Abyssal Basin

Cuvier Plateau

Wallaby Saddle

Perth Basin

Perth

Naturaliste Plateau

Great Australian Bight

Eyre Terrace

Spencer Canyon

Spring Canyon

Gantheaume Canyon

400km

-21.924 112.787 Degrees

Esri, GEBCO, DeLorme, NaturalVue

SLIP Map Services: connecting to SLIP services in other applications

SLIP Custom Map:

- Provides basic functionality to view and interrogate SLIP data

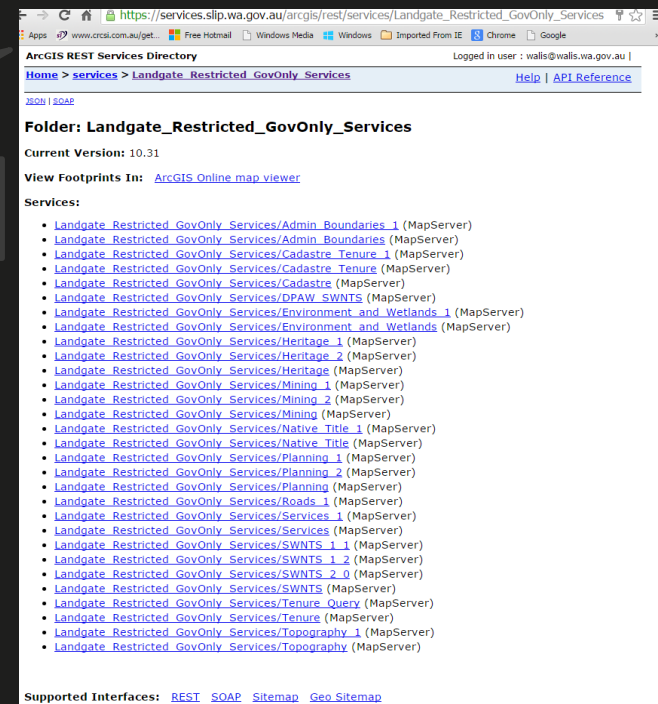
SLIP Data Services:

- Can be added to your own GIS application like Esri ArcMap or QGIS.
- GIS applications offer additional functionality like, adding your own data and doing data analysis
- Types of SLIP data services available are: Esri Map service, Esri REST service or Web Map Service

The restricted government services are available here: (user name and password required)

https://services.slip.wa.gov.au/arcgis/rest/services/Landgate_Restricted_GovOnly_Services

You can also view the SLIP Services list via an Internet browser.



SLIP Map Services: using SLIP services in ArcMap

To open Esri Map Services in ArcMap: in Arc Catalog – add GIS Servers

Add <https://services.slip.wa.gov.au/arcgis/services> to the **Server URL** text box

Then add your SLIP subscription account details under Username and Password

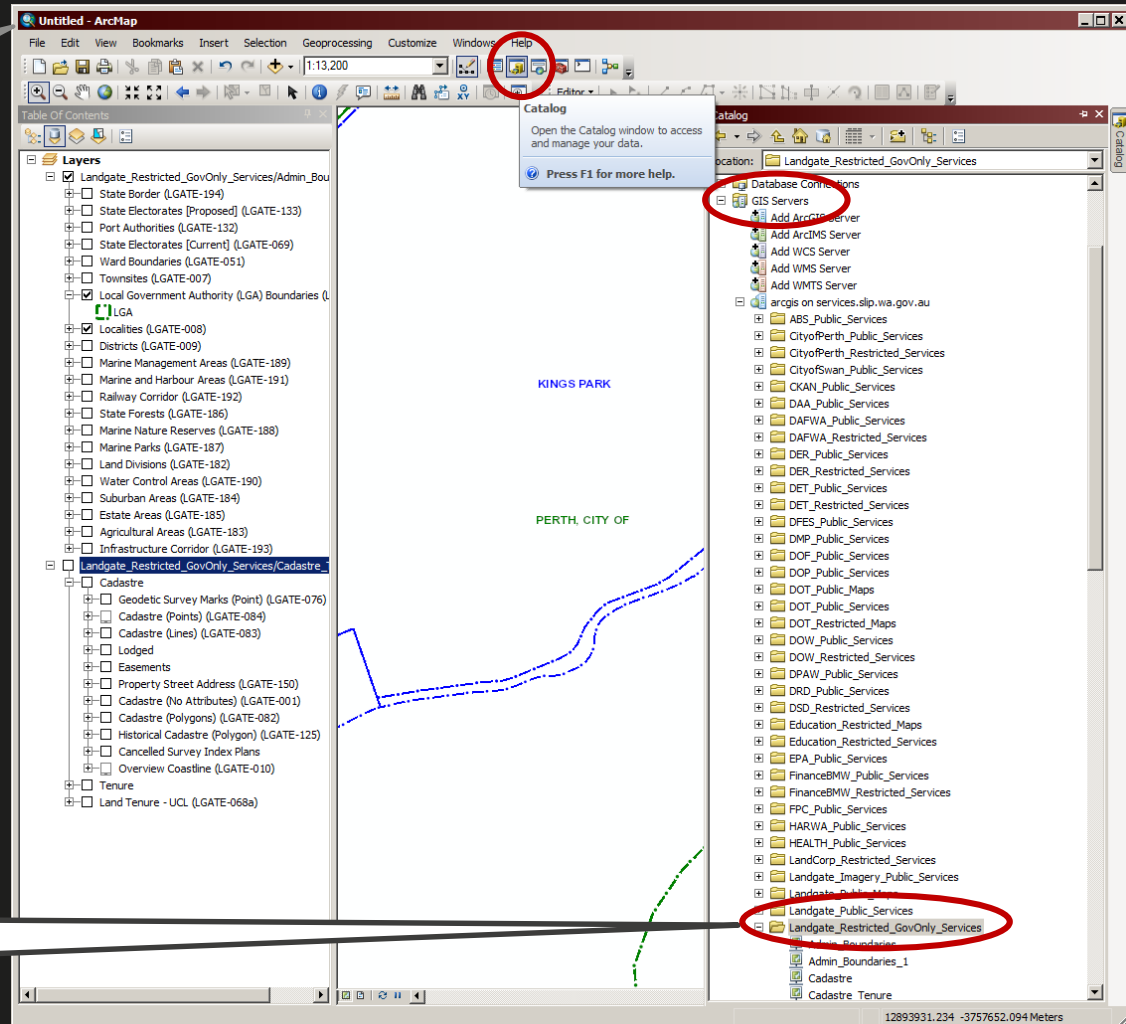
NOTE:

- Esri ArcMap is a professional GIS application.
- This software requires a license and are mostly used for high end GIS functionality

Contact the slip services team if you would like further instructions for ArcMap

Browse to find the data.

Add the SLIP data to your ArcMap GIS application



SLIP Map Services: using SLIP services in QGIS

To open SLIP Services in QGIS:

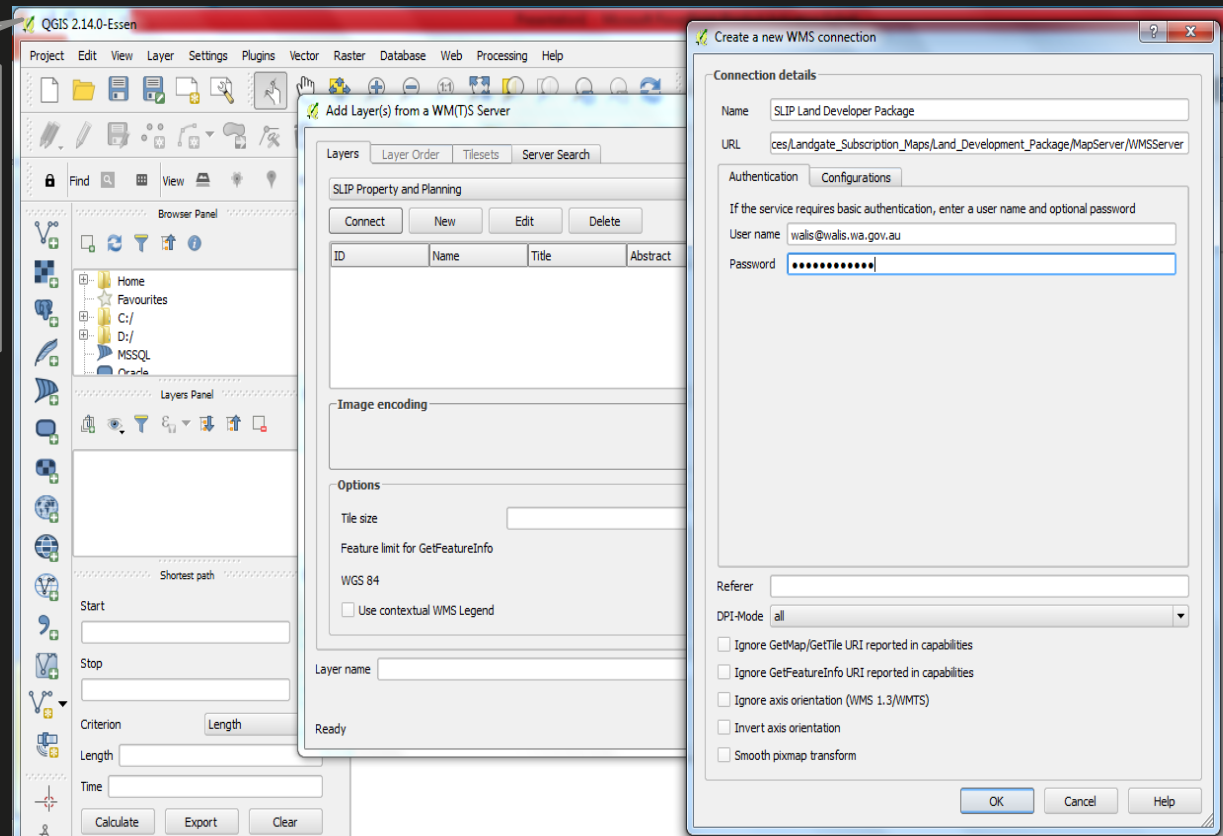
Web Map Services (WMS), Web Feature Services (WFS) and Web Map Tile Services (WMTS) can be added

- Copy the WMS / WFS / WMTS service link from any of the SLIP map services on the website
- In QGIS, select Layer – then Add Layer – and then Add WMS / WFS / WMTS Layer
- Create a New Connection by pasting the WMS / WFS / WMTS Layer Service link (URL) into the space
- Then add the other relevant Connection details and Authentication (your SLIP Username and Password)

NOTE:

- QGIS is a professional GIS application.
- This software is free

Contact the slip services team if you would like further instructions for QGIS



Visit the Open Data webpage:

<http://www.data.wa.gov.au/>

Contact Landgate's Account Managers:

servicemanagers@landgate.wa.gov.au

Phone: 9273 7373