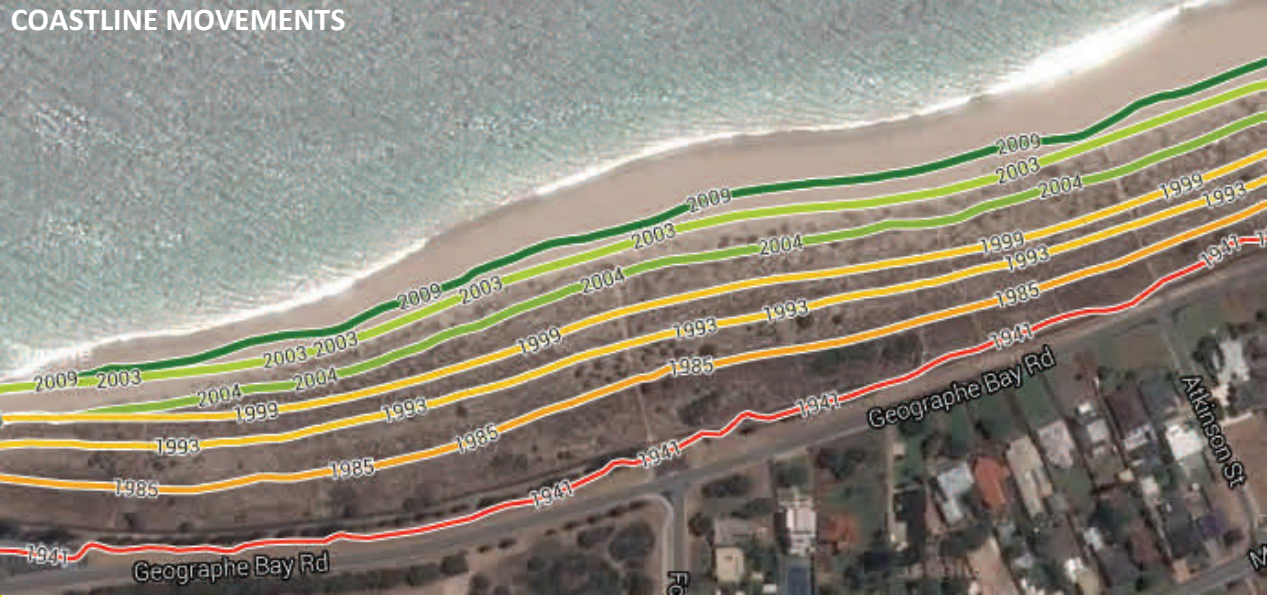


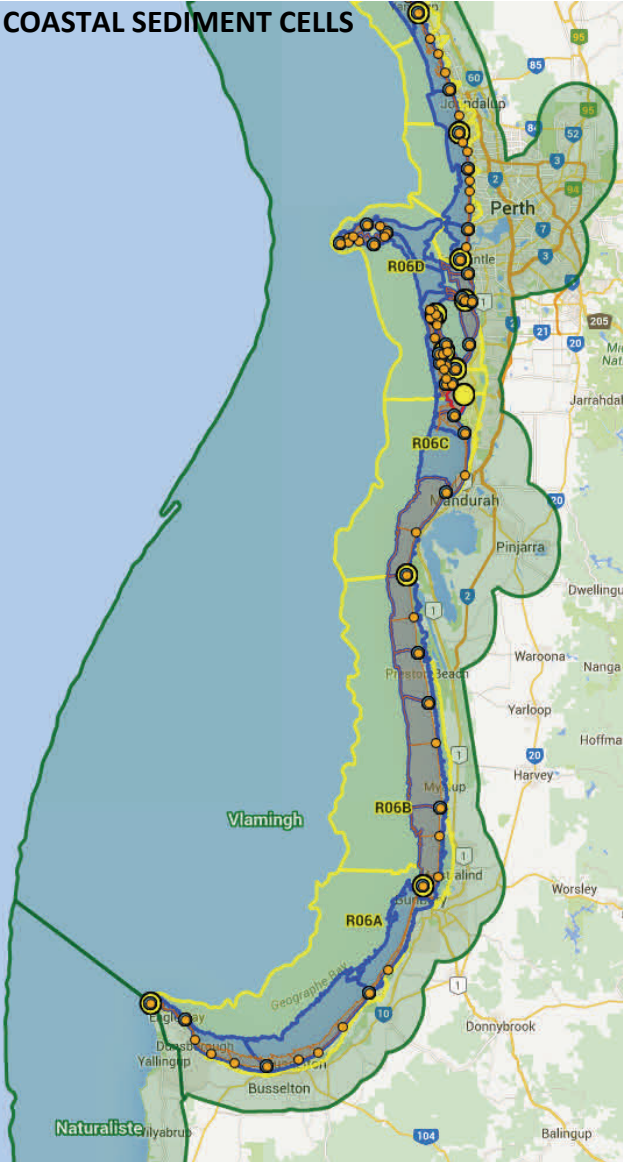
# COASTAL MANAGEMENT

## Managing Coastal Vulnerability Project

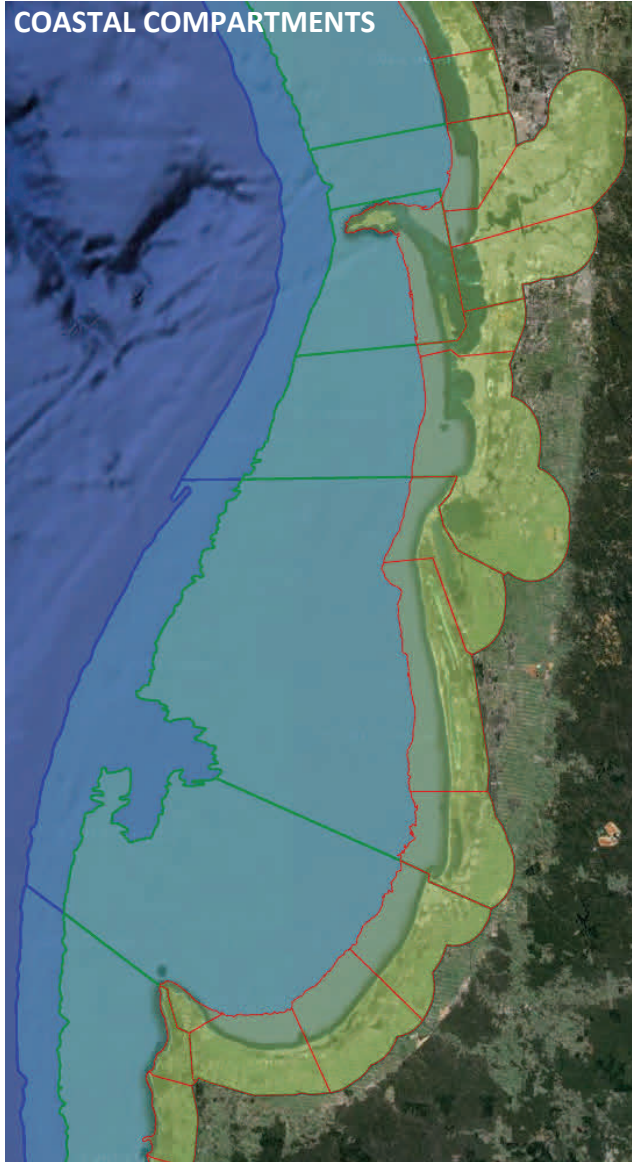
COASTLINE MOVEMENTS



COASTAL SEDIMENT CELLS



COASTAL COMPARTMENTS



# COASTAL MANAGEMENT

## Managing Coastal Vulnerability Project

The **Managing Coastal Vulnerability Project** have worked closely with the **Coastal Information and Coastal Management** branches at Department at the Department of Transport in Fremantle to develop the **Coastline Movements** and **Sediment Cells** Datasets. The MCV project team has also worked with **Geoscience Australia** to develop the **Coastal Compartments** dataset.

All of this data will be made publicly available through the SLIP Portal as a data download or viewable as a web map via Google Maps Engine .

**Coastline Movements Data** - this dataset contains the position of historic vegetation lines for WA and this data is available via SLIP. The complete dataset contains generalised water lines as well as changing sand drift areas.

**Sediment Cells Data** - Sediment cells are spatially discrete areas of the coast within which marine and terrestrial landforms are likely to be connected through processes of sediment exchange, often described using sediment budgets. They include areas of sediment supply (sources), sediment loss (sinks), and the sediment transport processes linking them (pathways).

**Coastal Compartments Data** - The Coastal Compartments of Western Australia are a physical framework for Marine & Coastal Planning.

For further information contact: DoT, Fremantle. Phone: 08 9435 7645 or Email: [cdc@transport.wa.gov.au](mailto:cdc@transport.wa.gov.au)

### About the Managing Coastal Vulnerability Project:

The project will facilitate a single point-of-access to the most up-to-date and authoritative marine information available to support timely decision-making for a diversity of interests and activities associated with the Western Australian marine environment.

Marine based data sets from State Government agencies will be prepared for inclusion onto the **Shared Location Information Platform** (SLIP) Future [www2.landgate.wa.gov.au/slip](http://www2.landgate.wa.gov.au/slip) and where indexes and metadata made available via the **Australian Ocean Data Network** (AODN) website, <http://portal.aodn.org.au/webportal>, the data preparation work will include the development of systems and processes to ensure that the data management practices within the agencies are of a standard able to maintain the datasets. Please contact Ralph Talbot-Smith, Project Manager for further information.